

Sunshine
PRIME
dwelling with green roof...

Prime in every sense...





1st, 3rd, 5th, 7th, 9th FLOOR PLAN



FLAT NO.	TYPE OF FLAT	SALE AREA (Sq. Ft.)
FLAT-1	2-BHK	1025.56
FLAT-2	3-BHK	1689.77
FLAT-3	2-BHK	1045.65
FLAT-4	2-BHK	1045.65
FLAT-5	2-BHK	1168.80

FLAT NO.	TYPE OF FLAT	SALE AREA (Sq. Ft.)
FLAT-6	2-BHK	1123.05
FLAT-7	1-BHK	697.85
FLAT-8	2-BHK	955.47
FLAT-9	2-BHK	1158.16
FLAT-10	3-BHK	1683.65

FLAT NO.	TYPE OF FLAT	SALE AREA (Sq. Ft.)
FLAT-11	1-BHK	792.81
FLAT-12	1-BHK	770.34
FLAT-13	2-BHK	894.03
FLAT-14	2-BHK	1124.65

2nd, 4th, 6th, 8th FLOOR PLAN



FLAT NO.	TYPE OF FLAT	SALE AREA (Sq. Ft.)
FLAT-1	2-BHK	1025.56
FLAT-2	3-BHK	1689.77
FLAT-3	2-BHK	1045.65
FLAT-4	2-BHK	1045.65
FLAT-5	2-BHK	1168.80

FLAT NO.	TYPE OF FLAT	SALE AREA (Sq. Ft.)
FLAT-6	2-BHK	1123.05
FLAT-7	1-BHK	697.85
FLAT-8	2-BHK	955.47
FLAT-9	2-BHK	1158.16
FLAT-10	3-BHK	1683.65

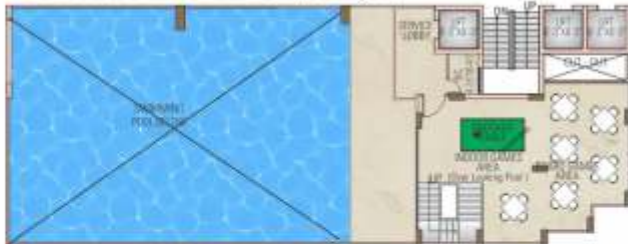
FLAT NO.	TYPE OF FLAT	SALE AREA (Sq. Ft.)
FLAT-11	1-BHK	792.81
FLAT-12	1-BHK	770.34
FLAT-13	2-BHK	894.03
FLAT-14	2-BHK	1124.65

10th, 11th, 12th FLOOR PLAN

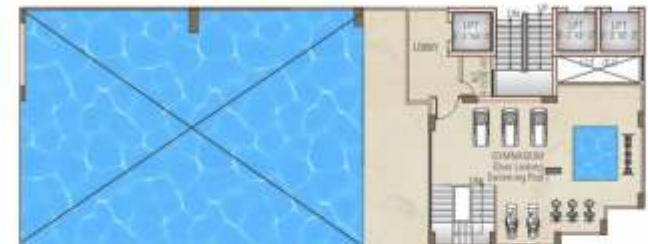
10th FLOOR LAYOUT PLAN



11th FLOOR LAYOUT PLAN (Only Changes)



12th FLOOR LAYOUT PLAN (Only Changes)



FLAT NO.	TYPE OF FLAT	SALE AREA (Sq. Ft.)
FLAT-1	2-BHK	1025.56
FLAT-2	3-BHK	1689.77
FLAT-3	2-BHK	1045.65
FLAT-4	2-BHK	1045.65
FLAT-5	2-BHK	1168.80

FLAT NO.	TYPE OF FLAT	SALE AREA (Sq. Ft.)
FLAT-6	2-BHK	1123.05
FLAT-7	1-BHK	697.85
FLAT-8	2-BHK	955.47
FLAT-9	2-BHK	1158.16
FLAT-10	3-BHK	1683.65

FLAT NO.	TYPE OF FLAT	SALE AREA (Sq. Ft.)
FLAT-11	1-BHK	792.81
FLAT-12	1-BHK	770.34
FLAT-13	2-BHK	894.03



Flat Type 1 | 2 BHK | Sale Area : **1025.56** Sq.ft.



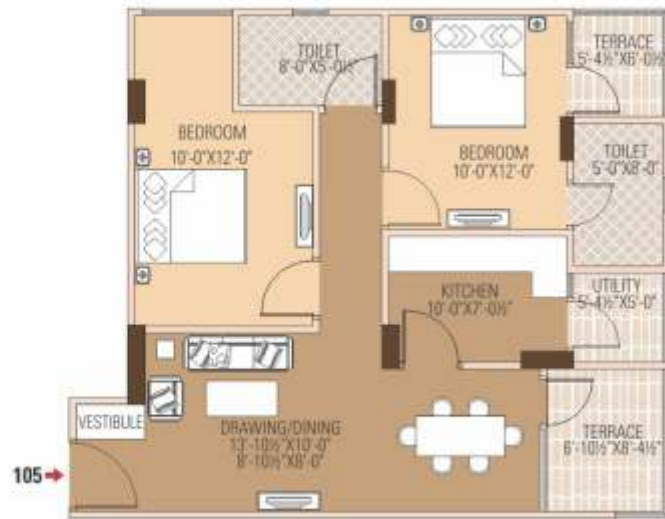
Flat Type 2 | 3 BHK | Sale Area : **1689.77** Sq.ft.



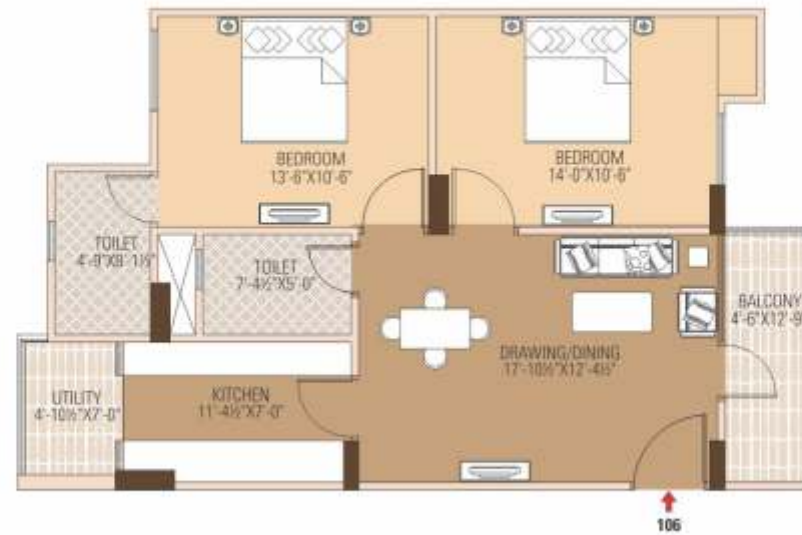
Flat Type 3 | 2 BHK | Sale Area : **1045.65** Sq.ft.



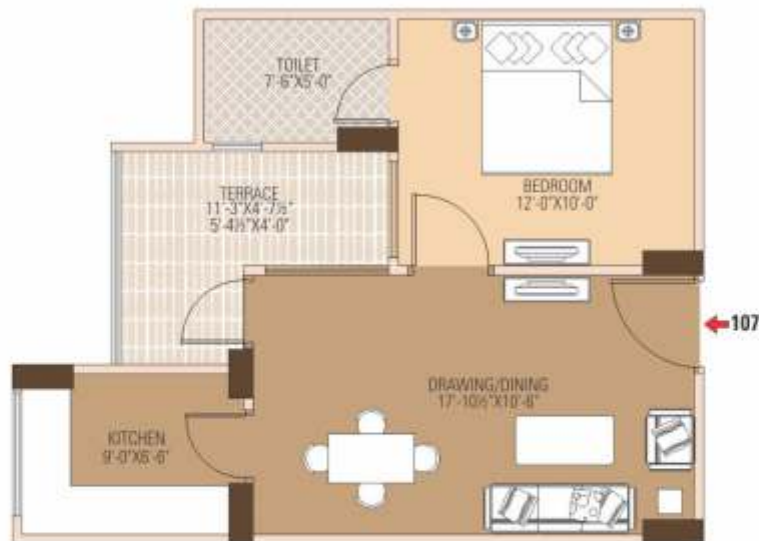
Flat Type 4 | 2 BHK | Sale Area : **1045.65** Sq.ft.



Flat Type 5 | 2 BHK | Sale Area : **1168.80** Sq.ft.



Flat Type 6 | 2 BHK | Sale Area : **1123.05** Sq.ft.



Flat Type 7 | 1 BHK | Sale Area : **697.85** Sq.ft.



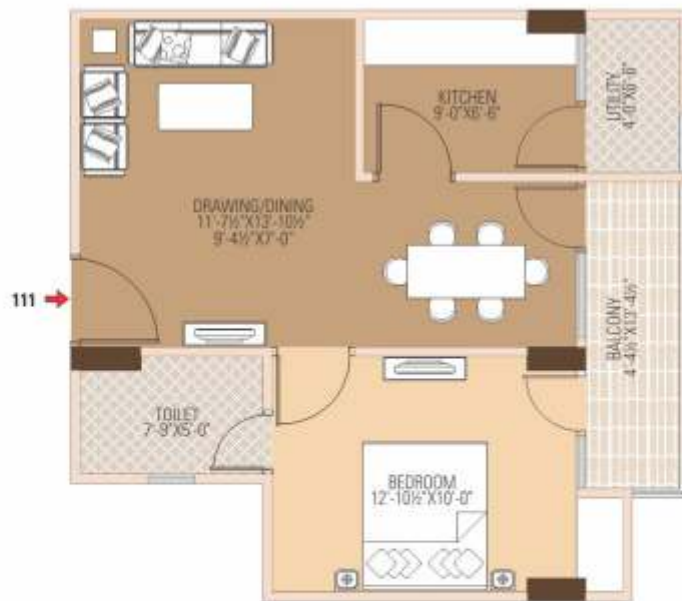
Flat Type 8 | 2 BHK | Sale Area : **955.47** Sq.ft.



Flat Type **9** | **2 BHK** | Sale Area : **1158.16** Sq.ft.



Flat Type **10** | **3 BHK** | Sale Area : **1683.65** Sq.ft.



Flat Type **11** | **1 BHK** | Sale Area : **792.81** Sq.ft.



Flat Type **12** | **2 BHK** | Sale Area : **770.34** Sq.ft.



Flat Type **13** | 2 BHK | Sale Area : **894.03** Sq.ft.



Flat Type **14** | 2 BHK | Sale Area : **1124.65** Sq.ft.



Infinity Swimming Pool



Graden on every floor

Prospective / 3D View of Flats



Type **11** 2 BHK



Type **14** 2 BHK



Type **2** 3 BHK

Specifications..

FLOORING & STONE WORK

- Vitrified Tile Flooring in Drawing, Dinning & Bedrooms
- Wooden flooring in Master Bedroom.
- Anti-skid Ceramic Tile flooring in Bathroom & Balconies
- Granite Top on Kitchen Counter
- 2' Ceramic Tile dado above Kitchen Counter
- Ceramic Tiles up to false ceiling in Toilet

ELECTRICAL FITTINGS & FIXTURES

- Fire Retardant High Quality Wires & Cables
- Modular Switches of High Grade
- Fans & Tube Lights in Living Area & Bedrooms
- Ceiling Light in Balconies
- Geysers & Exhaust Fans in Toilets
- Telephone wiring in each Room for Landline & Broadband Connection
- Cable wiring in each Room for Cable/DTH Connection

PLUMBING & SANITARY FITTINGS & FIXTURES

- CPVC/PPR Water Supply Lines
- Well Equipped Toilets with High Quality Sanitary ware
- Quarter Turn CP Fittings
- Complete Bathroom Accessories including Mirror, Towel Ring, Soap Dish & Cup Holder

FINISHING & PAINT WORK

- P.O.P. Finish with Cornices on Wall & Ceiling
- Acrylic Distemper Paint in Interiors with Dynamic Color Concepts
- Enamel Finish Doors & Windows

WOOD WORK & HARDWARE FITTINGS

- Hardwood Wooden Frames & Windows Panel Doors
- Designer Door on Main Gate
- Flush Door on Interior Gates
- Quality Hardware Fittings with SS Finish
- Fully Modular Kitchen with Stainless Steel Sink, SS Accessories, RO water filter, Geyser & Electric Chimney
- Curtain Rods on Windows



Salient Features

- Infinity Swimming Pool at 10th Floor
- Air Conditioned Apartments*
- In House Cab Facility for Residents.
- Zero Monthly maintenance charges for 5 years*
- Vertical Club House on 10th, 11th and 12th Floor
- Provision of Service Lift and Stretcher Lift along with three regular lifts.
- 1000 Sq Ft Garden on each Floor*
- Provision for piped gas
- Available in three sizes (1BHK, 2 BHK & 3 BHK) (165Units).
- Only 10 min. Drive from Jaipur Airport

visit as at : www.dhanukagroup.in



For Bookings please Contact:

8003582222

8769220000

8003533335

Location Map | Not to scale



“Sunshine Prime” | 200ft. Road, Near Iskcon Temple, Nera Muhana Mandi, Mansarovar Extension, Jaipur



202, R.K. Tower, Near Pital Factory, Jhotwara Road,
Jaipur 302016, Ph.: 0141-4023192 | Telefax : 0141-2203192
Visit us at : www.dhanukagroup.in

Disclaimer : This Brochure is purely conceptual and not a legal offering. Further the Promoters/Architect reserve the right to add/delete/ modify any details/specifications/elevation mentioned



Dhanuka Group | 2023-2024 | Jaipur, India